



## Pinnacle House

Battersea Reach, Battersea, SW18 1JE

**£1,000 Per Week**

This wonderfully bright and spacious three double bedroom apartment is situated on the seventh floor (with lifts) within one of London's most prestigious riverside developments.

The apartment has direct river views and is well furnished. This fine home comprises of:- Welcoming entrance Hallway with utility and storage cupboards, bright reception/dining room with floor to ceiling windows, with doors leading out to a private balcony looking directly over the river Thames, semi-open plan fully fitted kitchen, three double bedrooms (master with en-suite bathroom) second large family bathroom with walkin shower/WC. The property also benefits from having a secure underground parking space, wooden flooring throughout, comfort cooling and 'Sonas' surround sound system. Pinnacle House is one of the best 'Battersea Reach' luxury residential buildings and benefits from all of the amenities which include; riverside restaurants & coffee shops, well maintained communal gardens/walkways, secure underground parking by separate arrangement and 24 hour concierge service. The property is offered furnished and is available NOW for long let only.

- Three Double Bedrooms
- Two Bathrooms
- Utility cupboard
- Private Balcony
- River Views
- Large private Balcony
- 24 Hour Concierge
- Private secure Parking

### Viewing

Please contact our Messila Residential Office on 020 7586 6699 if you wish to arrange a viewing appointment for this property or require further information.



3



2



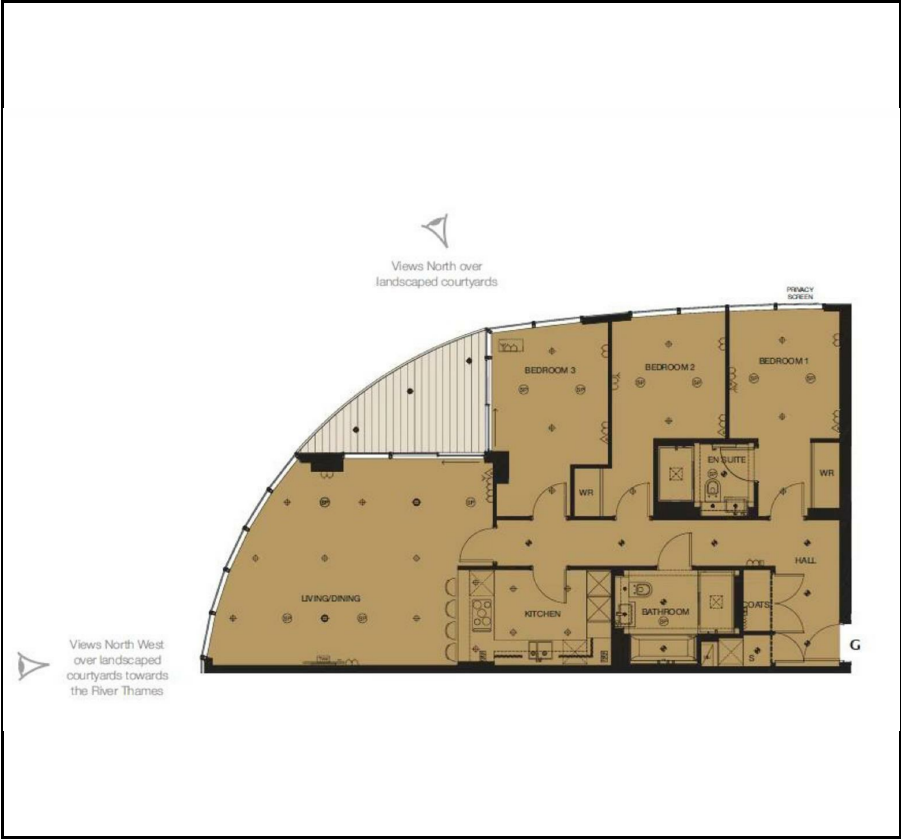
1



B



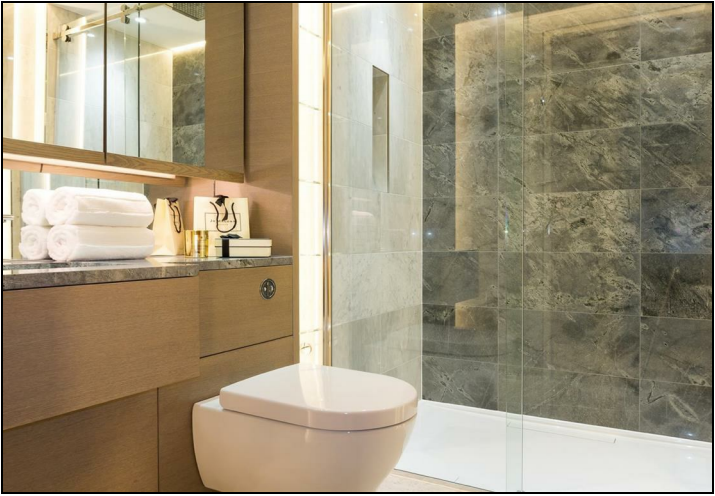
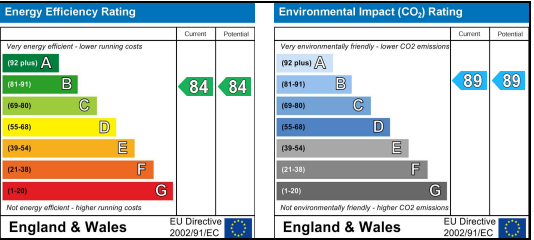
Floor Plan



Area Map



Energy Efficiency Graph



These particulars, whilst believed to be accurate are set out as a general outline only for guidance and do not constitute any part of an offer or contract. Intending purchasers should not rely on them as statements of representation of fact, but must satisfy themselves by inspection or otherwise as to their accuracy. No person in this firms employment has the authority to make or give any representation or warranty in respect of the property.